



**Bow Out (Pty) Ltd**

*Electrical Engineering & Industrial Automation*

**Bow Out (Pty) Ltd**

P.O. Box 1739, Orapa, Botswana

**Tel:** +267 291 0241

**Mobile:** +267 7199 7767 /  
+267 7220 3373

**Email:** [admin@bowout.co.bw](mailto:admin@bowout.co.bw)

**Website:** [www.bowout.co.bw](http://www.bowout.co.bw)

# COMPANY PROFILE



**ThermoFisher**  
SCIENTIFIC



**Rockwell**  
Automation

**Allen-Bradley**

**SIEMENS**



**PROFI**<sup>®</sup>  
**BUS**

**YOKOGAWA** ◆  
Co-Innovating tomorrow<sup>®</sup>

## INTRODUCTION

Bow Out (Pty) Ltd is a well-established and rapidly growing company specializing in providing innovative solutions and services in Electrical Engineering, Instrumentation, and Industrial Automation.

Incorporated in 2012 and fully operational since June 2017, Bow Out has already generated employment for over 10 citizen personnel. The company is also a registered service provider/vendor with Debswana Diamond Company, a world-class diamond producer renowned for its stringent standards in business practice and ethical conduct.

Bow Out delivers engineering solutions and services across multiple sectors, including Mineral Extraction and Processing, Manufacturing, Food and Beverage Production, Power Generation and Distribution, Agriculture, Water Reticulation, and other key industrial and productive sectors.

The company is strategically positioned to become a trusted local business partner, supporting industry growth, creating employment opportunities, and contributing significantly to Botswana's Gross Domestic Product (GDP).

## Our Vision

To be a domestic leader in delivering cutting-edge solutions and services in Electrical Engineering and Industrial Automation.

## Our Mission

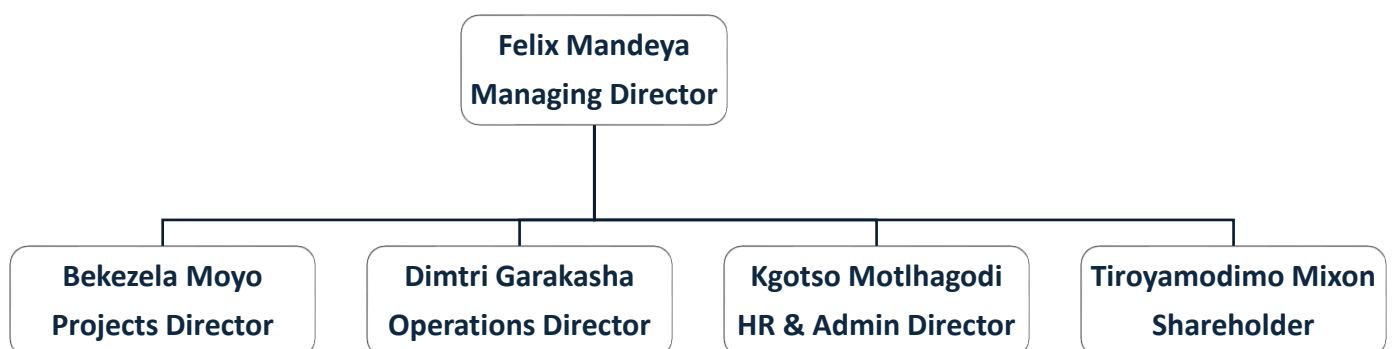
To achieve excellence in Electrical Engineering and Industrial Automation by leveraging a highly skilled local workforce, fostering superior technical partnerships, and supporting both local and international business partners with innovative, reliable, and efficient solutions.

## Ownership & Structure

- Local Ownership: 51%
- Foreign Shareholding: 49%
- Directors: 4
- Shareholders: 5



## Bow Out (Pty) Ltd – Management Structure



# Products & Services

- **Systems Integration** – automation & control solutions
- **Consultancy** – engineering & advisory
- **Project Management** – planning & delivery
- **Construction & Installations** – electrical & automation
- **Maintenance & Repairs** – uptime & safety
- **Sales & Supply** – electrical & instrumentation products

- Packaging machine maintenance
- Robotics & industrial automation

## Renewables

- Solar PV – residential, commercial, industrial
- Hybrid/off-grid solar with storage
- Solar pumping for agriculture & water
- Energy audits & smart energy management
- EV charging stations | Wind & hybrid systems

---

## Scope of Services

### Power Engineering

- Substations – design, build, test, commission, maintain
- Overhead lines up to 33kV | HT switching 33–220kV
- HT joints & terminations | Switchgear (OCB, SF<sub>6</sub>, vacuum)
- Transformers – install, commission, service
- Panels & switchboards – design, assembly, wiring
- Earthing, bonding & lightning protection
- Power factor correction, harmonic filtering, metering
- Generators – installation, synchronization & maintenance
- UPS & battery systems – installation & service
- LT/HT protection systems

### Automation & Instrumentation

- PLCs – install, program, optimize
- SCADA/DCS – design, integration, upgrades
- Fieldbus & industrial networking
- Process optimization & control
- Gauging & monitoring – level, flow, pressure, temperature
- Weighing systems | Smart sensors
- Pneumatics & hydraulics
- Conveyor & crusher protection
- Diamond recovery machine servicing

## Operations & Support

- Preventive/corrective maintenance contracts
- 24/7 breakdown response
- Calibration of E&I equipment
- Skilled operators & controllers
- Commissioning & decommissioning
- Spare parts supply
- Valve overhauls | Long-term partnerships

## Specialized Services

- Diamond recovery calibration & servicing
- Conveyor & crusher system integration
- Process optimization & efficiency
- Motors, transformers, VSDs, UPS – install & service
- Supply of spares | Plant-wide automation

## Digital & IT

- Industrial software programming
- Cloud monitoring & reporting
- AI-based predictive maintenance
- Remote plant monitoring
- IT/OT integration & cybersecurity



## Current & Prospective Business Partners

- Yokogawa, South Africa
- Actuator Technical Services (ATS), South Africa

---

## Corporate Responsibility & Community Impact

### Employment & Empowerment

- Local recruitment in Boteti region
- Youth training via industrial attachments
- Future apprenticeships in Electrical, Instrumentation & Automation

### Procurement

- Prioritize local sourcing of spares, materials & services
- Boosts local business growth & community development

### Remuneration & Wellness

- Market-related salaries, paid on time
- Company-funded medical exams
- Continuous wellness & safety programs

### Education & Community

- Support from primary to tertiary education
- Partnership with Letlhakane Senior Secondary School (prize giving & auditorium support)
- Motto: *"The bigger Bow Out becomes, the greater our contribution to society."*

### Health, Safety & Environment (HSE)

- Zero-compromise safety culture
- Compliance with **OHS18001, ISO14001 & ISO9001**
- Regular risk assessments & toolbox talks
- Strict PPE & legislative compliance
- Proactive environmental management

## HIV/AIDS Management

- Awareness & prevention programs
- Promote testing & treatment access
- Support for affected staff & families
- Anti-stigma engagement

## Quality Management

- Compliance with customer specifications
- Continuous improvement in quality & efficiency
- Customer-focused, reliable, innovative solutions

---

## Registrations & Insurance

- Certificate of Incorporation: **BW00000977483**
- Tax Certificate: **C20997**
- VAT No.: **BW00000977483-00-05-93**
- Workmen's Compensation: **COM9816** (Bryte Risk Services Botswana)




---

## Banking Details

- Account Name: **Bow Out (Pty) Ltd**
- Bank: **FNB, Letlhakane Branch**
- Account No.: **62387766226**

---

## Contact Us

 Plot 131, Letlhakane Industrial, Letlhakane  
 +267 2910241 |  admin@bowout.co.bw

## Key Contacts

- **Mr. Felix Mandeya**  
tel: +267 71997767  
email: fmandeya@bowout.co.bw
- **Mr. Dimtri Garakasha**  
tel: +267 72203373  
email: dgarakasha@bowout.co.bw
- **Mr. Bekezela Moyo**  
tel: +267 74516391  
email: bmoyo@bowout.co.bw